

# Portable Rotary Screw Air Compressors

Capacity range: 115 ~ 1600 CFM, 3.2 ~ 45 m<sup>3</sup>/min  
Pressure range: 7 ~ 35 Bar, 102 ~ 508 Psig



P-DNR201706-01 Specifications are subject to change without prior notice.  
Never use compressed air as breathing air without prior purification in accordance with local legislation and standards.



**DENAIR GROUP**

No. 6767, Tingfeng Rd., Jinshan District,  
Shanghai 201502, China  
Tel.: +86 21 3783 1829  
Fax: +86 21 6040 5929

[info@denair.net](mailto:info@denair.net)  
[www.denair.net](http://www.denair.net)

Copyright © 2021 Denair Group. All rights reserved.

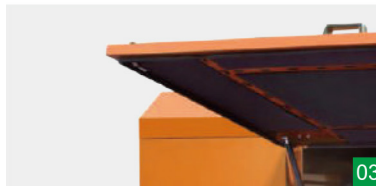
### DACY SERIES

Denair diesel portable screw air compressors are widely used in all kinds of heavy duty industries, such as mining, hydropower, oil and gas exploitation, borehole, shipyard, construction, chemical industry, quarry, sandblasting, pipeline pressure test, public works, etc. Free air delivery 3.2~39m<sup>3</sup>/min working pressure 7~35bar make these compressors fit for almost any application.



# PORTABLE ROTARY SCREW AIR COMPRESSORS

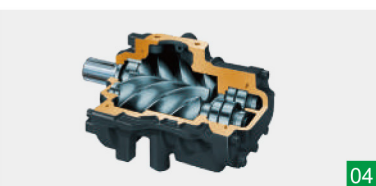
## Features and advantages



**Diesel Engine**  
Heavy Duty and Less Fuel Consumption compared to similar engine designs, better in durability and longevity.

**Chassis**  
Damped chassis and wear-resistant type. Installed brakes to keep it safe both for two-wheel and four-wheel type.

**Compressor Shell**  
Shell is made of thickness 2mm cold-roll steel sheets with special flame-retardant sound-proof material.



**State-of-the-art Screw Element**

- Original DENAIR air end
- Advanced SAP profile design
- The material of the rotors is American specialty steel
- Superior Sweden SKF element bearings

**Superior Air Filter and Oil Filter**

- Superior air filter with two-stage dust removal and filtering system with an efficiency of up to 99.9% even in heavy-duty environments
- Extends the service life of the compressor parts and components, ensures high air quality
- Quality oil filter with excellent oil purification capability ensures a clean and safe oil system
- Long service periods and easy filter changes reduce maintenance costs

**Skid-mounted type is available**

# Technical parameters

Model	DACY-3.2/8	DACY-5.3/7	DACY-5/10	DACY-6/7	DACY-7.5/7	DACY-8/15	DACY-8/10	DACY-9/8	DACY-10/13	DACY-11/10	DACY-11/13	DACY-12/7	DACY-12/10	DACY-12/13	
<b>Machine</b>															
Free air delivery*	m <sup>3</sup> /min	3.2	5.3	5	6	7.5	8.5	8.5	9	10	11	11	12	12	
	CFM	115	190	177	212	265	300	300	318	353	388	388	424	424	
Normal working pressure	bar(e)	8	7	10	7	7	15	10	8	13	10	13	7	10	
	psig	116	102	145	102	102	218	145	116	189	145	189	102	145	
Weight	kg	900	1700	1700	1700	1700	2000	2000	2000	2900	2900	3400	2900	3400	
Dimensions (without towbar)	L(mm)	2170	2900	2900	2900	2900	2720	2720	2720	3080	3080	3340	3080	3340	
	W(mm)	1600	1880	1880	1880	1880	2060	2060	2060	2020	2020	2020	2020	1720	
	H(mm)	1540	1540	1540	1540	1540	2240	2240	2240	2140	2140	2610	2140	2610	
Wheel qty		2	2	2	2	2	2	2	2	2	2	4	2	4	
Size * No. of air outlet valve		G 1/2" *1 G 1-1/4" *1	G 3/4" *1 G 1-1/4" *1	G 3/4" *1 G 1-1/4" *1	G 3/4" *1 G 1-1/4" *1	G 3/4" *1 G 1-1/4" *1	G 1" *1 G 1-1/2" *1	G 1" *1 G 1-1/2" *1	G 1" *1 G 1-1/2" *1	G 1" *1 G 1-1/2" *1	G 1" *1 G 1-1/2" *1	G 1" *1 G 1-1/2" *1	G 1" *1 G 1-1/2" *1	G 1" *1 G 1-1/2" *1	
<b>Diesel engine</b>															
Manufacturer		Yangdong					Cummins								
Model		YSD490G					4BT3.9-C80								
Bore*Stroke(mm)*No. of cylinders		90*100*4					102*120*4								
Engine speed(nominal)	RPM	2400					2000								
Engine speed(unloaded)	RPM	1500					1400								
Rated power	kw	32					60								
	hp	42					80								
Engine oil capacity	L	7					12								
Coolant capacity	L	15					20								
Fuel tank capacity	L	52					109								
Storage battery		12 V 24 V					24 V 24 V								
voltage and current		80Ah					120Ah								
<b>Compressor</b>															
No. of compression stage		1													
Compressed air vessel capacity	L	27													
Lubricant capacity	L	20													

Model	DACY-13/8	DACY-13/13	DACY-16/10	DACY-15/13	DACY-15/16	DACY-15/18	DACY-17/7	DACY-17/8	DACY-17/13	DACY-17/14.5	DACY-17/16	DACY-18/18	DACY-19/14.5		
<b>Machine</b>															
Free air delivery *	m <sup>3</sup> /min	13	13	16	15	15	15	17	17	17	17	17	18	19	
	CFM	460	460	565	530	530	530	600	600	600	600	600	636	671	
Normal working pressure	bar(e)	8	13	10	13	16	18	7	8	13	14.5	16	18	14.5	
	psig	116	189	145	189	232	261	102	116	189	210	232	261	210	
Weight	kg	2900	3400	3400	3400	3900	4400	3400	3400	3900	4400	4400	4400	4400	
Dimensions (without towbar)	L(mm)	3080	3340	3340	3340	3240	3150	3340	3340	3240	3150	3150	4230	4230	
	W(mm)	2020	1720	1720	1720	1740	1770	1720	1720	1720	1770	1770	1990	1990	
	H(mm)	2140	2610	2610	2610	2610	2620	2610	2610	2610	2620	2620	2700	2700	
Wheel qty		2	4	4	4	4	4	4	4	4	4	4	4		
Size * No. of air outlet valve		G 1" *1 G 2-1/2" *1	G 1" *1 G 2-1/2" *1	G 1" *1 G 2-1/2" *1	G 1" *1 G 2-1/2" *1	G 1" *1 G 2-1/2" *1	G 1" *1 G 2-1/2" *1	G 1" *1 G 2-1/2" *1	G 1" *1 G 2-1/2" *1	G 1" *1 G 2-1/2" *1	G 1" *1 G 2-1/2" *1	G 1" *1 G 2-1/2" *1	G 1" *1 G 2-1/2" *1		
<b>Diesel engine</b>															
Manufacturer		Cummins													
Model		6BT5.9-C150			6BTA5.9-C180			6CTA8.3-C215			6CTA8.3-C260			6LTA8.9-C325	
Type		Vertical, in-line, Water-cooled, 4-stroke, Direct injection													
Bore*Stroke(mm)*No. of cylinders		102*120*6			114*135*6			114*135*6			114*135*6			114*145*6	
Engine speed(nominal)	RPM	2500			2200			2200			2200			2200	
Engine speed(unloaded)	RPM	1400			1500			1500			1500			1500	
Rated power	kw	110			132			132			160			194	
	hp	150			180			180			215			260	
Engine oil capacity	L	14			20			15			20			15	
Coolant capacity	L	30			50			50			50			55	
Fuel tank capacity	L	130			295			360			400			590	
Storage battery		24 V 135Ah			24 V 135Ah			24 V 165Ah			24 V 165Ah			24 V 180Ah	
voltage and current		135Ah			135Ah			165Ah			165Ah			180Ah	
<b>Compressor</b>															
No. of compression stage		1													
Compressed air vessel capacity	L	110													
Lubricant capacity	L	50													

Model	DACY-19/16	DACY-20/16	DACY-21/10	DACY-22/20	DACY-22.5/14	DACY-26/25	DACY-27/10	DACY-32/10	DACY-33/35	DACY-34/25	DACY-39/25	DACY-45/10	
<b>Machine</b>													
Free air delivery *	m <sup>3</sup> /min	19	20	23	22	22.5	26	27	32	33	34	39	45
	CFM	671	706	825	777	800	918	953	1130	1165	1200	1377	1650
Normal working pressure	bar(e)	16	16	10	20	12/14	25	10	10	35	25	25	10
	psig	232	232	145	290	203	363	145	145	508	363	363	150
Weight	kg	4400	4400	3900	4800	4400	5000	4400	4800	7200	6800	7200	6200
Dimensions (without towbar)	L(mm)	4230	4230	3240	4700	4230	4700	4230	4700	5000	4700	5000	5000
	W(mm)	1990	1990	1740	2300	1990	2100	1990	2300	2200	2100	2200	2200
	H(mm)	2700	2700	2610	2750	2700	2900	2700	2750	2900	2900	2900	3150
Wheel qty		4	4	4	4	4	4	4	4	4	4	4	
Size * No. of air outlet valve		G 1" *1 G 1-1/2" *1	G 1" *1 G 2-1/2" *1	G 1" *1 G 2" *1	G 1" *1 G 1-1/2" *1	G 1" *1 G 2" *1	G 3/4" *1 G 2" *1	G 1" *1 G 2" *1	G 1" *1 G 2" *1	G 3/4" *1 G 2" *1	G 3/4" *1 G 2" *1	G 3/4" *1 G 2" *1	
<b>Diesel engine</b>													
Manufacturer		Cummins											
Model		6LTA8.9-C325		6CTA8.3-C260		6LTA8.9-C360-II		6LTA8.9-C325		6LTA8.9-C360-II		KTA19-P700	
Type		Vertical, in-line, Water-cooled, 4-stroke, Direct injection											
Bore*Stroke(mm)*No. of cylinders		114*145*6		114*135*6		116.5*148*6		130*163*6		114*145*6		116.5*148*6	
Engine speed(nominal)	RPM	2200		2200		2200		1800		2200		1800	
Engine speed(unloaded)	RPM	1500		1500		1500		1300		1500		1300	
Rated power	KW	239		239		264		410		239		264	
	HP	325		325		360		550		325		360	
Engine oil capacity	L	30		15		30		35		30		38	
Coolant capacity	L	55		55		65		110		55		130	
Fuel tank capacity	L	590		590		640		590		640		800	
Storage battery		24 V 180Ah		24 V 180Ah		24 V 165Ah		24 V 300Ah		24 V 180Ah		24 V 300Ah	
voltage and current		180Ah		180Ah		165Ah		300Ah		180Ah		300Ah	
<b>Compressor</b>													
No. of compression stage		1											
Compressed air vessel capacity	L	210											
Lubricant capacity	L	110											

\*)Free air delivery in accordance with ISO 1217 : 2009, Annex C: Absolute intake pressure 1 bar (a), cooling and air intake temperature 20°C.

Note: Skid-mounted type is available.



01

### Spark Arrester (Option)

It is a safety fire-proof and preventing device installed after the exhaust pipes of diesel compressors to allow the exhaust gas flow to pass through and prevent flames and sparks.



04

### Anti-static fan belt and blade (Standard)

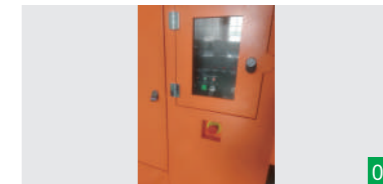
Prevent sparks caused by static electricity and prevent fire from forming.



02

### Inlet Shutdown Valve (Option)

Providing emergency over-speed shutdown protection for diesel engines and is also the most effective way to prevent out-of-control situations.



05

### Emergency Stop (Standard)

To stop the diesel compressor quickly without losing control.



03

### Automatic trip/pop off system (Option)

Cut off the system once the compressor is overload.



06

### DNV Certified Frame (Option)

The frame is easy to lift and move and can play the role of reinforcement.