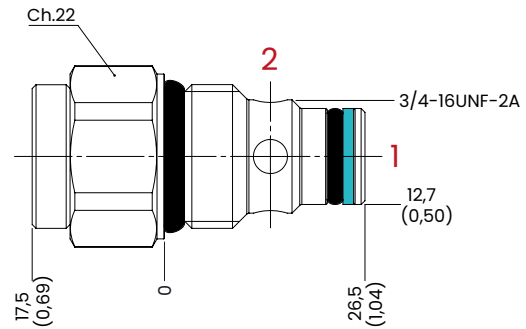

cartridge **VALVES**



CHECK VALVES POPPET TYPE

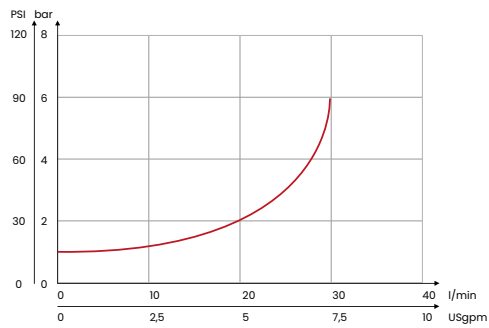


mm
[Inches]

HYDRAULIC CIRCUIT



PERFORMANCES

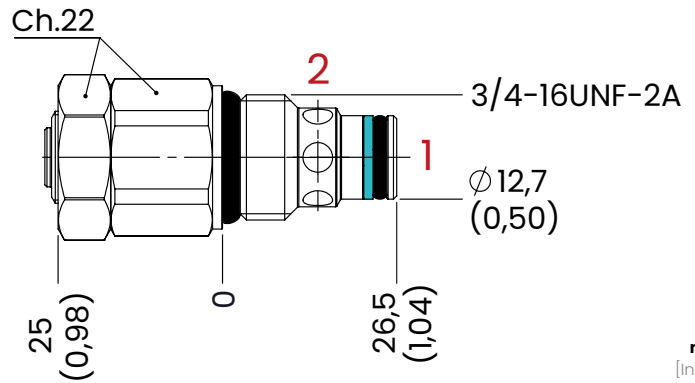


ORDERING CODE

ORDERING CODE	CAVITY	SPRING	MAX FLOW l/min USgpm	MAX PRESSURE bar PSI	TIGHTENING TORQUE Nm lbt ft	WEIGHT kg lbt
UC205	SAE8/2	0,5 bar [7,3 PSI]	30 [1,18]	350 [5075]	30 [22]	0,06 [0,13]
UC230		3 bar [43,5 PSI]				
UC245		4,5 bar [65,5 PSI]				

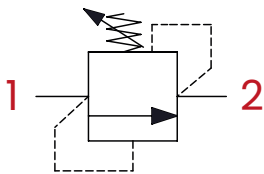
M20 SAE 8/2

RELIEF VALVES 20 L

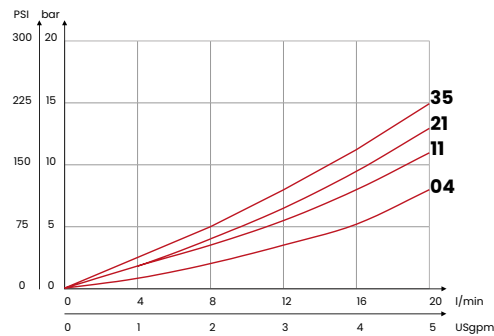


mm
[Inches]

HYDRAULIC CIRCUIT



PERFORMANCES



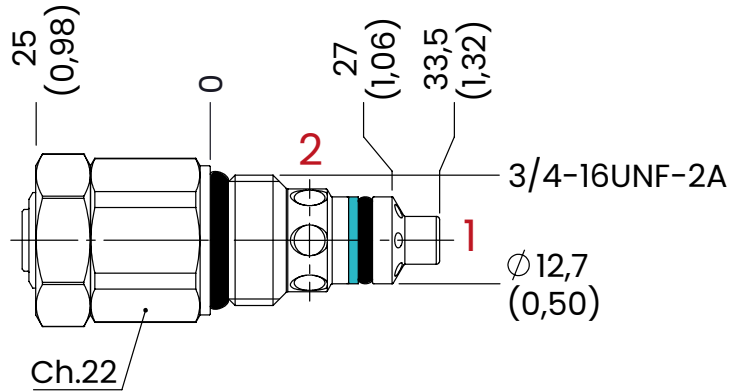
ORDERING CODE

ORDERING CODE	CAVITY	RAGE SPRING	INCREASE TO TURN	MAX FLOW l/min USgpm	MAX PRESSURE bar PSI	TIGHTENING TORQUE Nm lbt ft	WEIGHT kg lbt
M20C04	SAE8/2	10/40 bar [145/580 PSI]	20 bar/ al giro [290 PSI/turn]	20 [5,3]	350 [5075]	30 [22]	0,11 [0,24]
M20C11		20/110 bar [290/1959 PSI]	40 bar/ al giro [580 PSI/turn]				
M20C21		30/210 bar [435/3045 PSI]	70 bar/ al giro [1015 PSI/turn]				
M20C35		40/350 bar [580/5075 PSI]	130 bar/ al giro [1885 PSI/turn]				

Mineral oil: DIN 51524 ISO 6743/4 | Oil viscosity: 15 to 250 cSt 15-250 mm²/s | Oil temperature: -4°F + 176°F -20°C +80°C | Ambient temperature: -4°F + 122°F -20°C +50°C | Max contamination index with filter: 5 to 250 cSt 15-250 mm²/s | It is necessary a filter use to protect the valve (advised filtration 15 µm) | Max leakage: 0,25 cm³/min - 5 drops/min at 80% of the calibration pressure

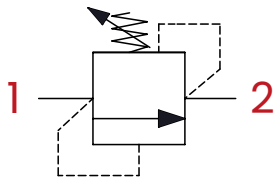
M21 SAE 8/2

RELIEF VALVES POPPET TYPE - 20 LT

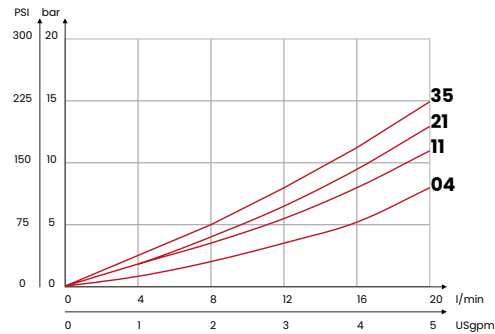


mm
[Inches]

HYDRAULIC CIRCUIT



PERFORMANCES

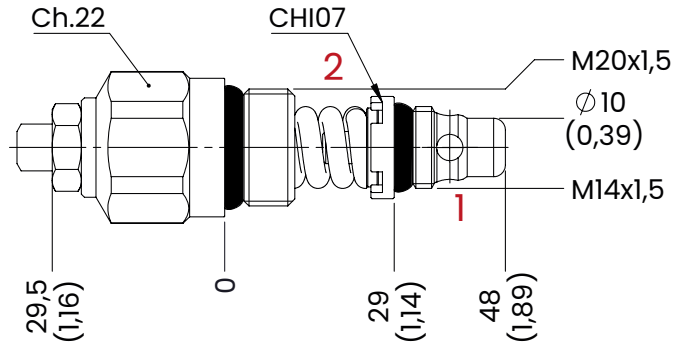


ORDERING CODE

ORDERING CODE	CAVITY	RAGE SPRING	INCREASE TO TURN	MAX FLOW l/min USgpm	MAX PRESSURE bar PSI	TIGHTENING TORQUE Nm lbt ft	WEIGHT kg lbt
M21C04	SAE8/2	10/40 bar [145/580 PSI]	20 bar/ al giro [290 PSI/turn]	20 [5,3]	350 [5075]	30 [22]	0,11 [0,24]
M21C11		20/110 bar [290/1959 PSI]	40 bar/ al giro [580 PSI/turn]				
M21C21		30/210 bar [435/3045 PSI]	70 bar/ al giro [1015 PSI/turn]				
M21C35		40/350 bar [580/5075 PSI]	130 bar/ al giro [1885 PSI/turn]				

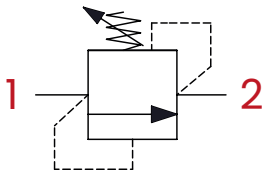
M40 M20 x 1,5

RELIEF VALVES 40 L

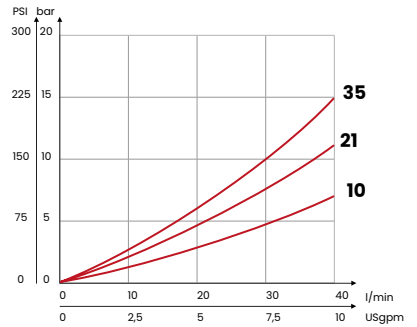


mm
[Inches]

HYDRAULIC CIRCUIT

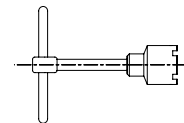


PERFORMANCES



OPTIONAL TOOL

TYPE
CHI07



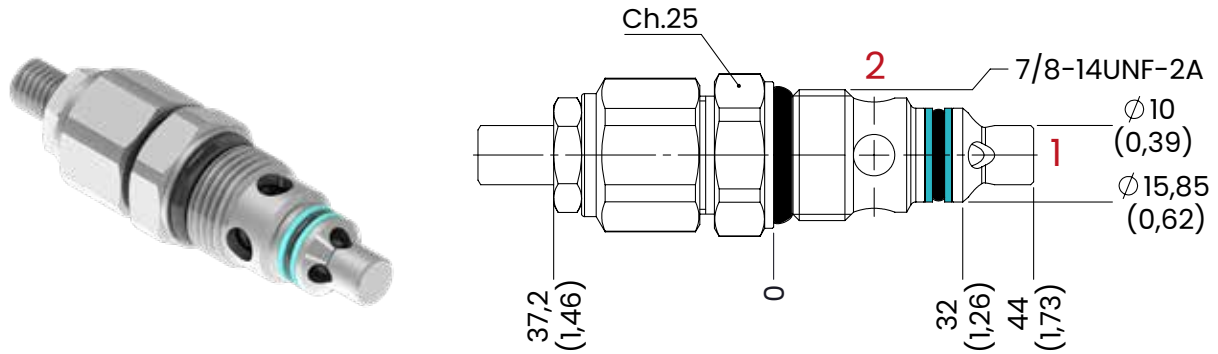
ORDERING CODE

ORDERING CODE	CAVITY	RAGE SPRING	INCREASE TO TURN	MAX FLOW l/min USgpm	MAX PRESSURE bar PSI	M14X1,5 TIGHTENING TORQUE Nm lbt ft	M20X1,5 TIGHTENING TORQUE Nm lbt ft	WEIGHT kg lbt
M40C10	M20 x 1,5	10/100 bar [145/1450 PSI]	12 bar/al giro [174 PSI/turn]	40 [10,6]	350 [5075]	10 [7]	40 [30]	0,13 [0,29]
M40C21		20/210 bar [290/2045 PSI]	33 bar/al giro [479 PSI/turn]					
M40C35		70/350 bar [1015/5075 PSI]	70 bar/al giro [1015 PSI/turn]					

Available with handknob

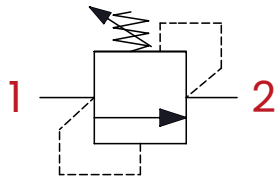
M42 SAE 10/2

RELIEF VALVES 40 L

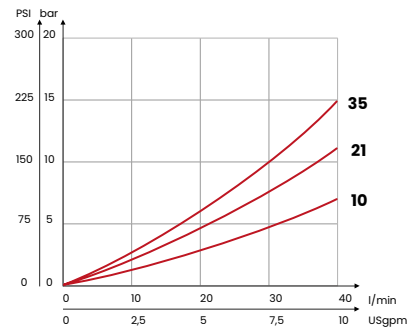


mm
[Inches]

HYDRAULIC CIRCUIT



PERFORMANCES



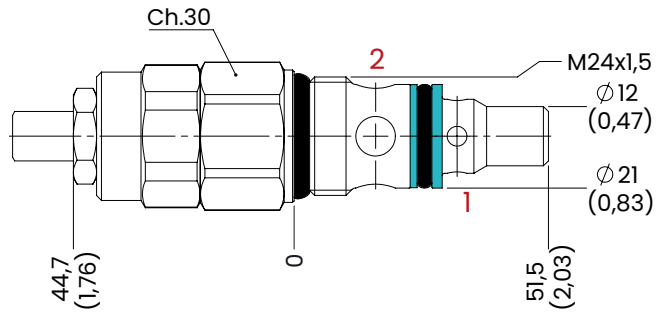
ORDERING CODE

ORDERING CODE	CAVITY	RAGE SPRING	INCREASE TO TURN	MAX FLOW l/min USgpm	MAX PRESSURE bar PSI	TIGHTENING TORQUE Nm lbt ft	WEIGHT kg lbt
M42C10	SAE 10/2 [7/8-14 UNF]	10/100 bar [145/1450 PSI]	12 bar/al giro [174 PSI/turn]	40 [10,6]	350 [5075]	40 [30]	0,18 [0,37]
M42C21		20/210 bar [290/2045 PSI]	33 bar/al giro [479 PSI/turn]				
M42C35		70/350 bar [1015/5075 PSI]	70 bar/al giro [1015 PSI/turn]				

Available with handknob

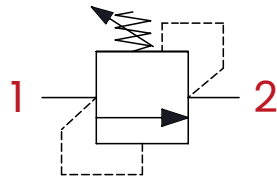
M80 M24 x 1,5

RELIEF VALVES 80 L

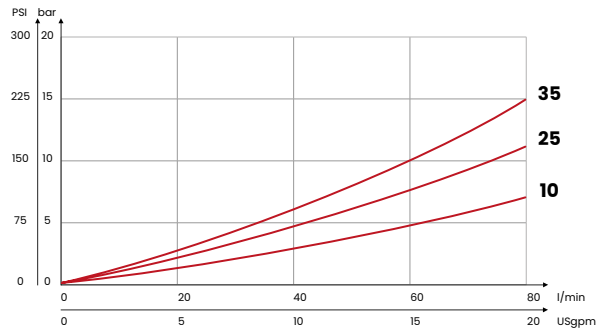


mm
[Inches]

HYDRAULIC CIRCUIT



PERFORMANCES



ORDERING CODE

ORDERING CODE	CAVITY	RAGE SPRING	INCREASE TO TURN	MAX FLOW l/min USgpm	MAX PRESSURE bar PSI	TIGHTENING TORQUE Nm lbt ft	WEIGHT kg lbt
M80C10	M24 x 1,5	10/100 bar [145/1450 PSI]	25 bar/al giro [362 PSI/turn]	80 [21,1]	350 [5075]	60 [44]	0,25 [0,55]
M80C25		20/250 bar [290/3625 PSI]	40 bar/al giro [580 PSI/turn]				
M80C35		50/350 bar [725/5075 PSI]	90 bar/al giro [1305 PSI/turn]				

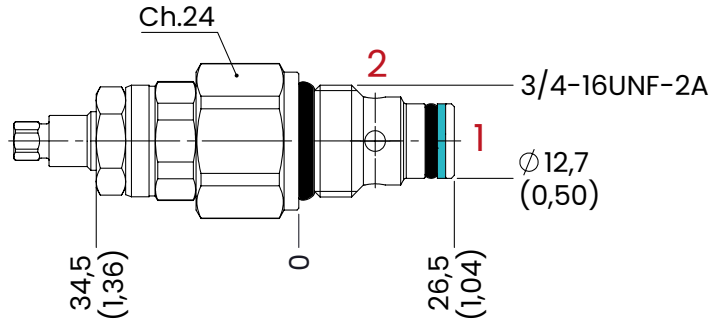
Available with handknob

UNIDIRECTIONAL FLOW CONTROL VALVES

CU2C

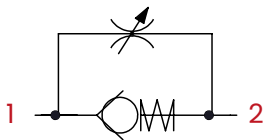


CU2V

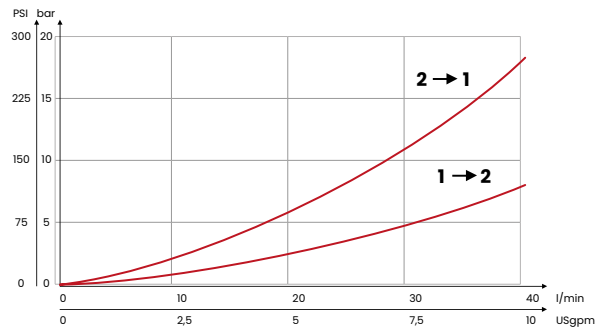


mm
[Inches]

HYDRAULIC CIRCUIT



PERFORMANCES



ORDERING CODE

ORDERING CODE	CAVITY	MAX FLOW l/min USgpm	MAX PRESSURE bar PSI	TIGHTENING TORQUE Nm lbt ft	WEIGHT kg lbt
CU2C	SAE8/2	40 [10,6]	350 [5075]	30 [22]	0,13 [0,30]
CU2V					

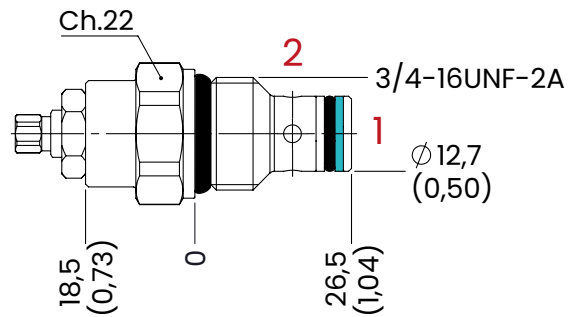
Available with handknob

BIDIRECTIONAL FLOW CONTROL VALVES

CB2C

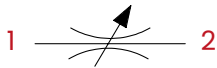


CB2V

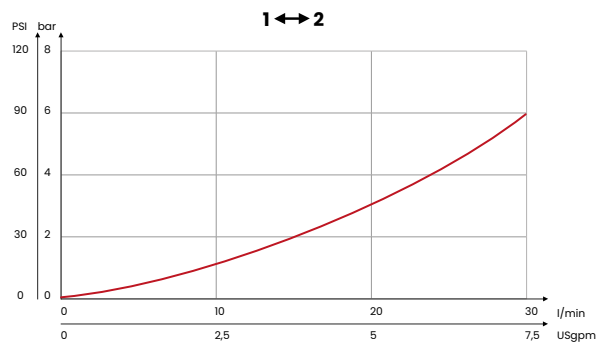


mm
[Inches]

HYDRAULIC CIRCUIT

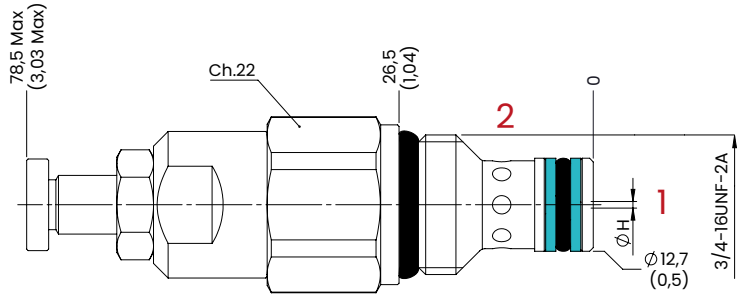


PERFORMANCES



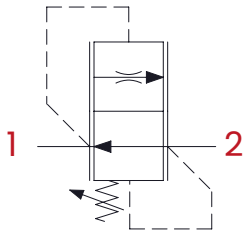
ORDERING CODE

ORDERING CODE	CAVITY	MAX FLOW l/min USgpm	MAX PRESSURE bar PSI	TIGHTENING TORQUE Nm lbt ft	WEIGHT kg lbt
CB2C	SAE8/2	40 [10,6]	350 [5075]	30 [22]	0,1 [0,22]
CB2V					0,12 [0,26]

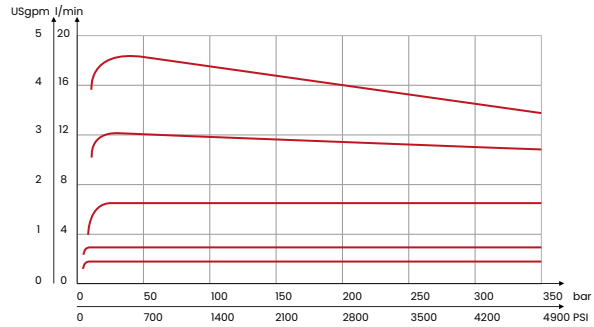


mm
[inches]

HYDRAULIC CIRCUIT



PERFORMANCES

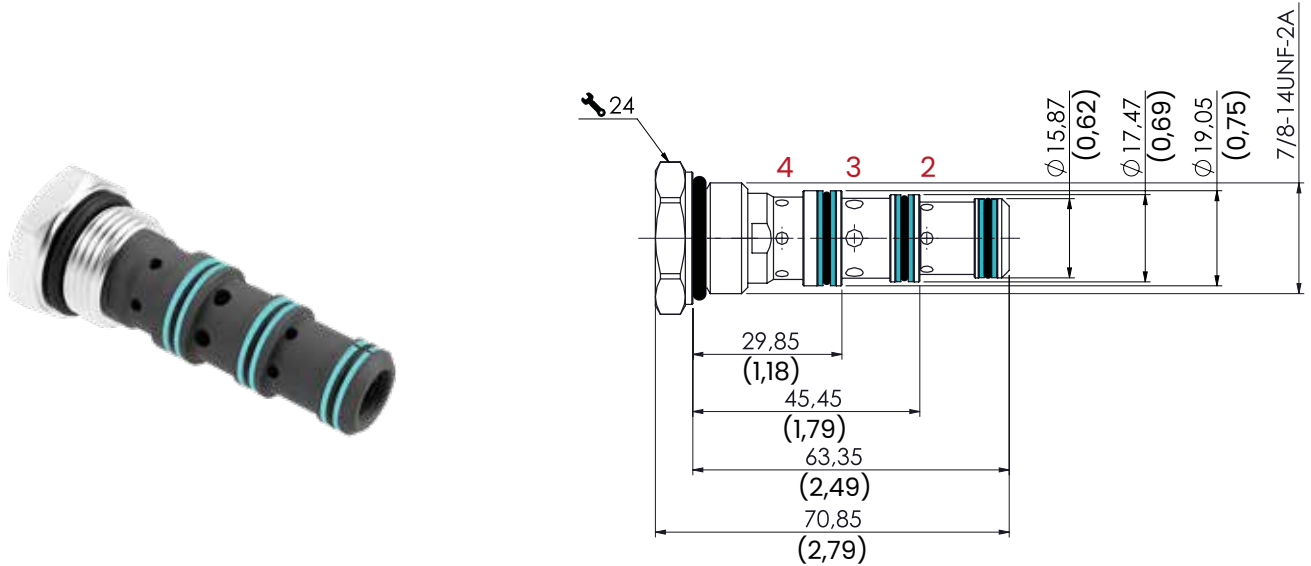


ORDERING CODE

ORDERING CODE	CAVITY	MAX FLOW CONTROLLED FLOW AT 100 bar ± 10% l/min USgpm	Ø H	MAX PRESSURE bar PSI	TIGHTENING TORQUE Nm lbt ft	WEIGHT kg lbt
DR2C1	SAE8/2	0,6-2,2 l/min [0,16-0,58 USgpm]	0,9 [0,03]	350 [5075]	25/30 [19/22]	0,12 [0,26]
DR2C2		0,8-3 l/min [0,21-0,79 USgpm]	1 [0,04]			
DR2C3		1,3-5,1 l/min [0,34-1,35 USgpm]	1,3 [0,05]			
DR2C4		1,9-6,8 l/min [0,5-1,8 USgpm]	1,5 [0,06]			
DR2C5		2,6-9,1 l/min [0,69-2,4 USgpm]	1,7 [0,07]			
DR2C6		4-14,4 l/min [1,06-3,08 USgpm]	2,2 [0,09]			
DR2C7		7,2-18 l/min [1,9-4,75 USgpm]	2,8 [0,11]			

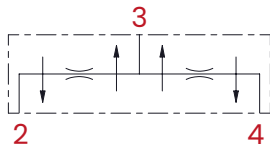
VDF3 DIVIDER SAE 10/4

FLOW DIVIDERS

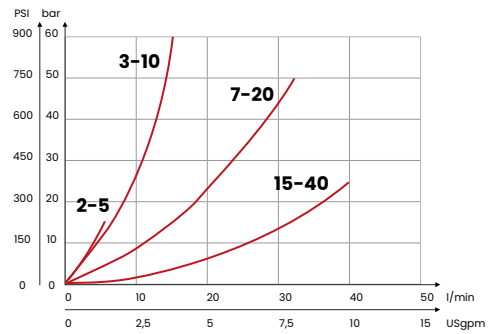


mm
[inches]

HYDRAULIC CIRCUIT



PERFORMANCES



ORDERING CODE

ORDERING CODE	CAVITY	INLET FLOW RANGE l/min USgpm	MAX FLOW l/min USgpm	MAX PRESSURE bar PSI	TIGHTENING TORQUE Nm lbt ft	WEIGHT kg lbt
VDF3S1	SAE 10/4	2-5 [0,5-1,3]	40 [10,6]	350 [5075]	30-35 [22-26]	0,12 [0,26]
VDF3S2		3-10 [0,8-2,6]				
VDF3S3		7-20 [1,8-5,2]				
VDF3S4		15-40 [3,9-10,4]				
Aluminium body						