
hydraulic **COMPONENTS**



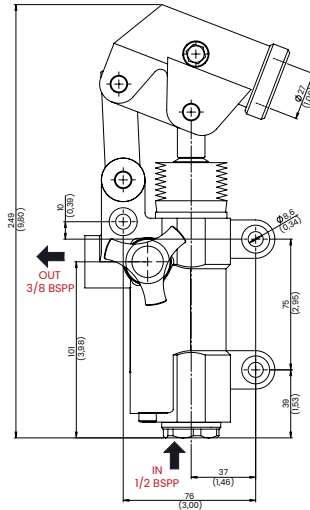
P20 20 cm³ SINGLE ACTING



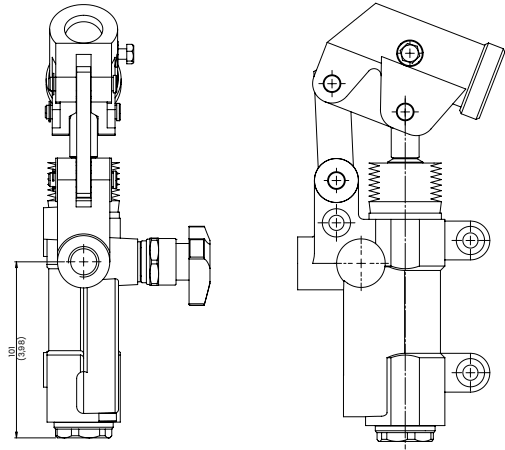
PUMPS FOR WALL MOUNTING



PM20
Standard



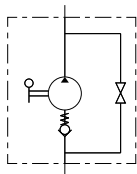
PM20E
Without release
hand knob



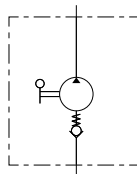
mm
[Inches]

HYDRAULIC CIRCUIT

PM20
Standard

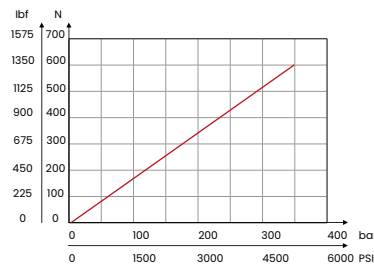


PM20E
Without release
hand knob



PERFORMANCES

Effort operating with 600 mm long lever



Specifications

- Cast iron body
- Piston treated with Niploy
- Rubber protection
- Lever connection Ø 27
- White zinc plated external parts
- Standard colour black

ORDERING CODE

ORDERING CODE	VERSIONS	OPTIMAL PRESSURE bar PSI	MAX PRESSURE bar PSI	DISPLACEMENT cm ³ in ³	WEIGHT kg lbt
P20	Hand pump with release hand knob	150 [2175]	350 [5075]	20 [1,22]	3,4 [7,5]
P20E	Hand pump without release hand knob				
LEV27600	Standard lever to be ordered separately				

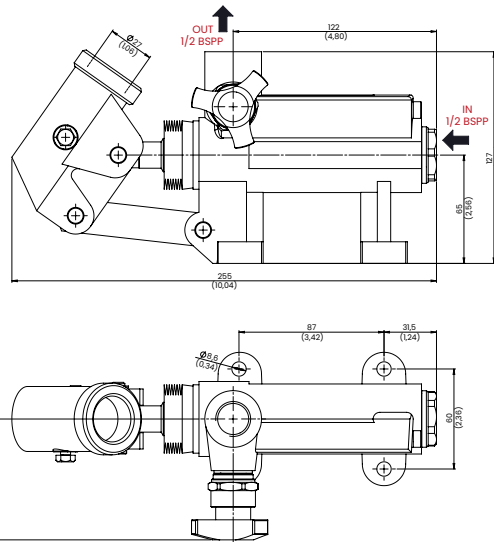
P50 50 cm³ SINGLE ACTING



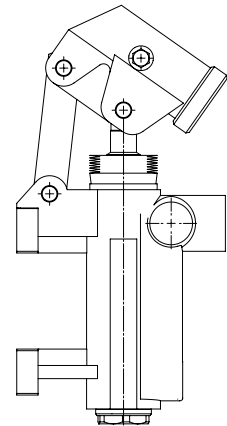
PUMPS FOR WALL MOUNTING



PM50
Standard



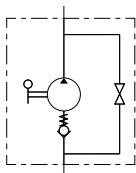
PM50E
Without release hand knob



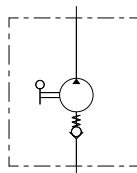
mm
[Inches]

HYDRAULIC CIRCUIT

PM50
Standard

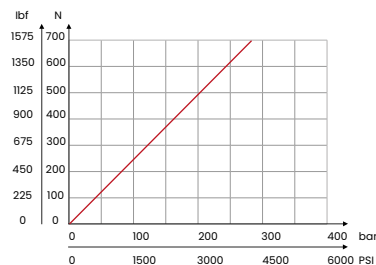


PM50E
Without release hand knob



PERFORMANCES

Effort operating at the end of the lever



Specifications

- Cast iron body
- Piston treated with Niploy
- Rubber protection
- Lever connection $\varnothing 27$
- White zinc plated external parts
- Standard colour black

ORDERING CODE

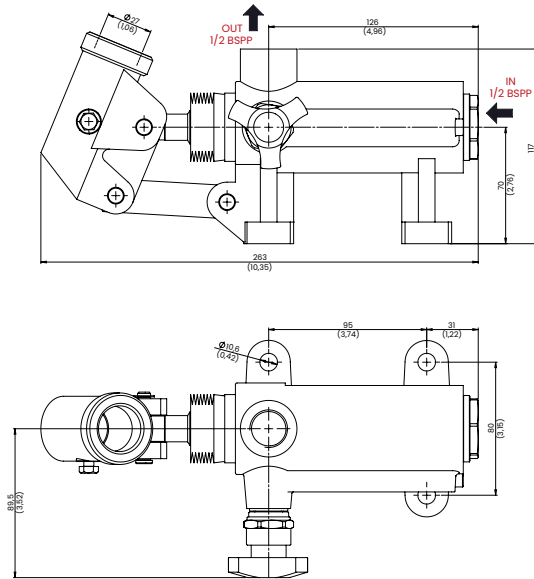
ORDERING CODE	VERSIONS	OPTIMAL PRESSURE bar PSI	MAX PRESSURE bar PSI	DISPLACEMENT cm ³ in ³	WEIGHT kg lbt
P50	Hand pump with release hand knob	80 [1160]	280 [4060]	50 [3,05]	4,2 [9,25]
P50E	Hand pump without release hand knob				
LEV27600	Standard lever to be ordered separately				

P70 70 cm³ SINGLE ACTING

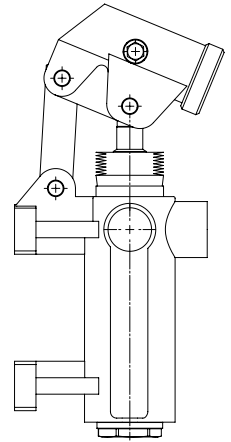
PUMPS FOR WALL MOUNTING



PM70
Standard

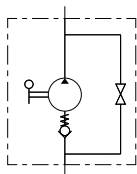


PM70E
Without release
hand knob

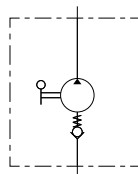


HYDRAULIC CIRCUIT

PM70
Standard

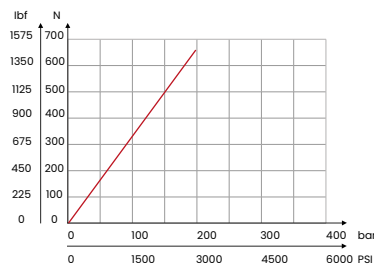


PM70E
Without release
hand knob



PERFORMANCES

Effort operating at the end of the lever



Specifications

- Cast iron body
- Piston treated with Niploy
- Rubber protection
- Lever connection Ø 27
- White zinc plated external parts
- Standard colour black

mm
[Inches]

ORDERING CODE

ORDERING CODE	VERSIONS	OPTIMAL PRESSURE bar PSI	MAX PRESSURE bar PSI	DISPLACEMENT cm ³ in ³	WEIGHT kg lbt
P70	Hand pump with release hand knob	50 [725]	200 [2900]	70 [4,27]	5,6 [12,34]
P70E	Hand pump without release hand knob				
LEV27600	Standard lever to be ordered separately				

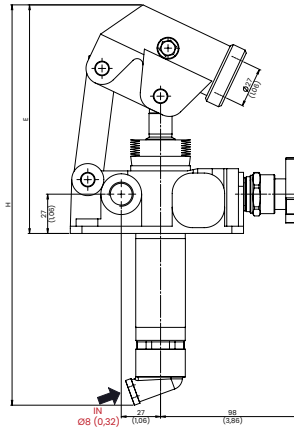
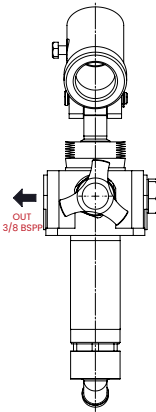
PDS 12/25/45 cm³ SINGLE ACTING



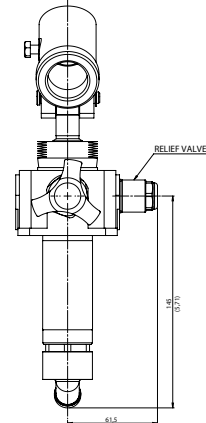
PUMPS FOR FIXING TO THE TANK



PDS
Standard



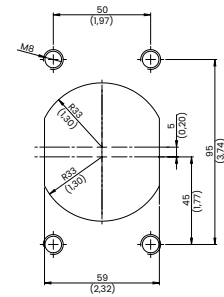
PDS_B
With relief valve



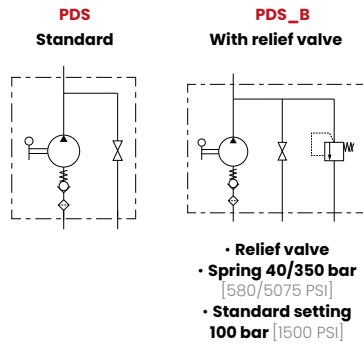
TECHNICAL CHARACTERISTICS

mm [Inches]

H	E	Ø D
253 [9,96]	166 [6,54]	34 [1,34]
273 [10,75]	172 [6,77]	40 [1,57]
283 [11,14]		

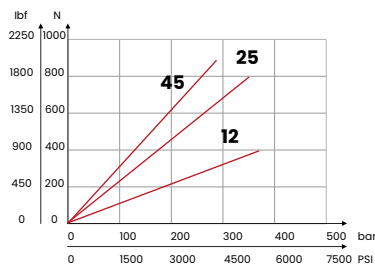


HYDRAULIC CIRCUIT



PERFORMANCES

Effort operating at the end of the lever



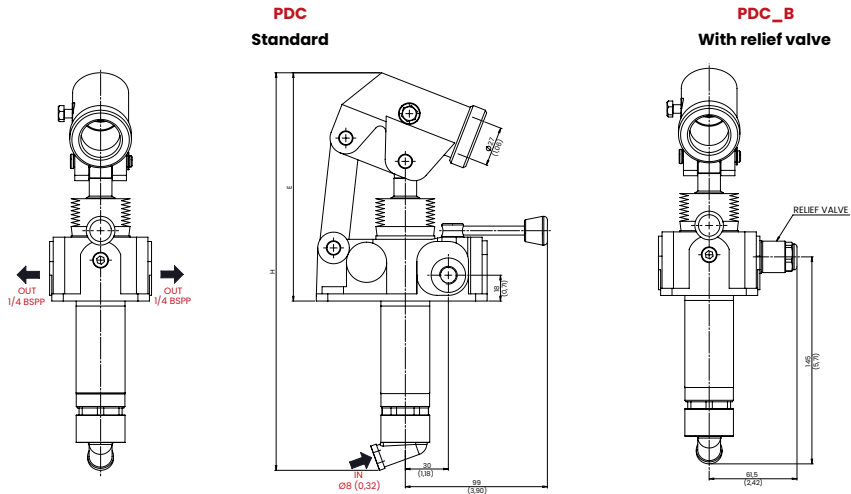
Specifications

- Cast iron body
- Piston treated with Niploy
- Rubber protection
- Lever connection Ø 27
- White zinc plated external parts
- Standard colour black

ORDERING CODE

ORDERING CODE	VERSION	DISPLACEMENT cm ³ in ³	OPTIMAL PRESSURE bar PSI	MAX PRESSURE bar PSI	WEIGHT kg lbt
PDS12	Hand pump with release hand knob	12 [0,73]	220 [3190]	380 [5510]	3,7 [8,15]
PDS25		25 [1,53]	120 [1740]	350 [5075]	
PDS45		45 [2,75]	80 [1160]	280 [4060]	
PDS12B	Hand pump with relief valve and release hand knob	12 [0,73]	220 [3190]	380 [5510]	
PDS25B		25 [1,53]	120 [1740]	350 [5075]	
PDS45B		45 [2,75]	80 [1160]	280 [4060]	
LEV27600	Standard lever to be ordered separately				0,9 [2]

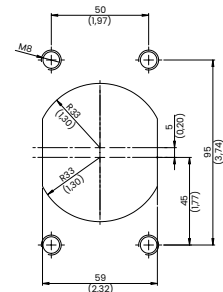
PUMPS FOR FIXING TO THE TANK



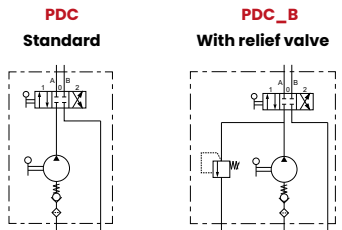
TECHNICAL CHARACTERISTICS

H	E	Ø D
253 [9,96]	166 [6,54]	34 [1,34]
273 [10,75]	172 [6,77]	40 [1,57]
283 [11,14]		

mm [Inches]



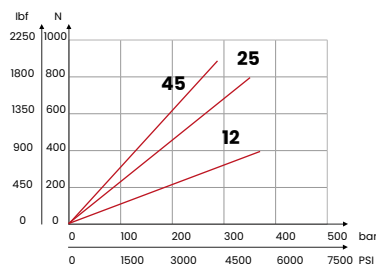
HYDRAULIC CIRCUIT



- Relief valve
- Spring 40/350 bar [580/5075 PSI]
- Standard setting 100 bar [1500 PSI]

PERFORMANCES

Effort operating at the end of the lever

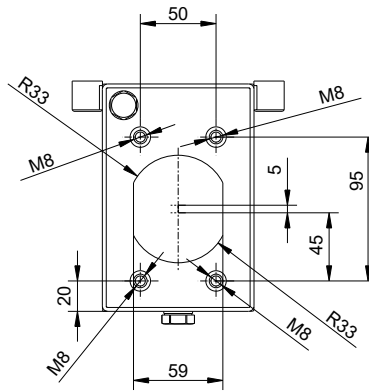
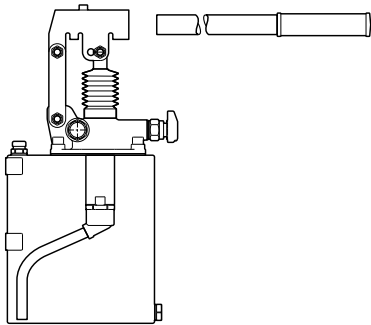
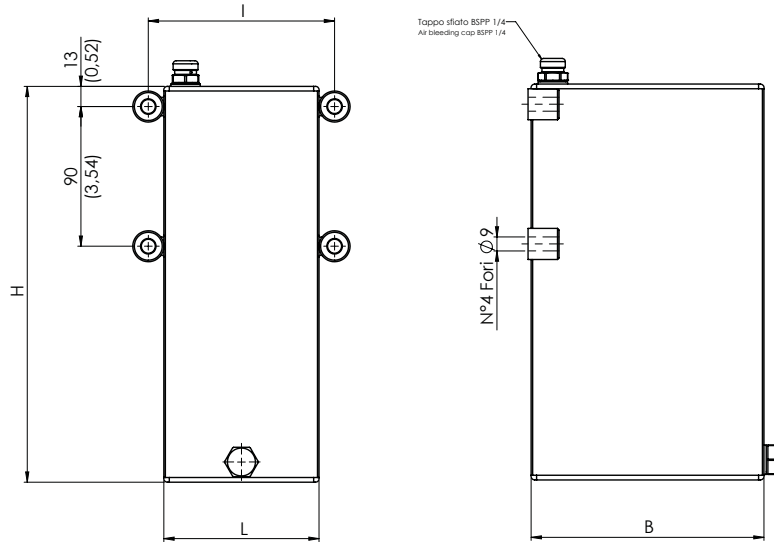


Specifications

- Cast iron body
- Piston treated with Niploy
- Rubber protection
- Lever connection Ø 27
- White zinc plated external parts
- Standard colour black

ORDERING CODE

ORDERING CODE	VERSION	DISPLACEMENT cm ³ in ³	OPTIMAL PRESSURE bar PSI	MAX PRESSURE bar PSI	WEIGHT kg lbt
PDC12	Hand pump with 4/3 flow divider, closed center	12 [0,73]	220 [3190]	380 [5510]	3,7 [8,15]
PDC25		25 [1,53]	120 [1740]	350 [5075]	
PDC45		45 [2,75]	80 [1160]	280 [4060]	
PDC12B	Hand pump with 4/3 flow divider, closed center and relief valve	12 [0,73]	220 [3190]	380 [5510]	
PDC25B		25 [1,53]	120 [1740]	350 [5075]	
PDC45B		45 [2,75]	80 [1160]	280 [4060]	
LEV27600	Standard lever to be ordered separately				0,9 [2]



mm
[Inches]

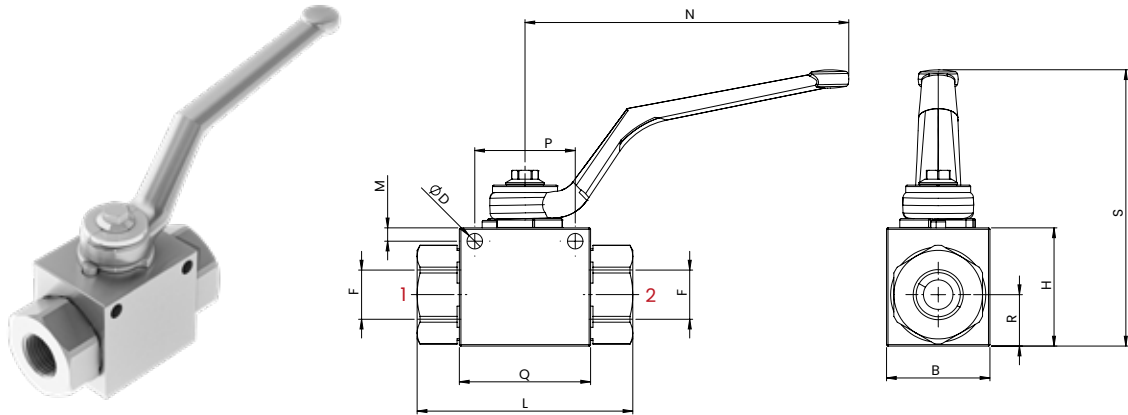
Specifications

- Steel reservoir
- RAL9005 black oil proof painting
- The reservoir is including the breather plugs and draft tube

ORDERING CODE

ORDERING CODE	CAPACITY l GL	H	B	L	I	DRAF TUBE Ø 10 [0,39] mm Inches	WEIGHT kg lbt
TPS01	1 [0,22]	120 [4,72]	150 [5,91]	100 [4,72]	120 [4,72]	85 [3,35]	2,2 [5]
TPS02	2 [0,44]	185 [7,28]				114 [4,49]	3 [6,62]
TPS03	3 [0,66]	255 [10,04]				180 [7,09]	3,7 [8,2]
TPS05	5 [1,1]	200 [7,87]	175 [6,89]	175 [6,89]	195 [7,68]	156 [6,14]	5,3 [11,7]
TPS07	7 [1,54]	275 [10,83]				215 [8,46]	6,6 [14,5]
TPS10	10 [2,22]	380 [14,96]				325 [12,8]	8,3 [18,3]

BALL VALVES

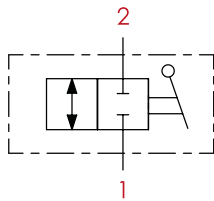


TECHNICAL CHARACTERISTICS

mm [Inches]

F	L	B	H	Ø D	M	N	P	Q	R	S
1/4 BSPP	69 [2,72]	26 [1,02]	33 [1,3]	5,1 [0,2]	4 [0,16]	110 [4,33]	34 [1,34]	40 [1,57]	14,5 [0,57]	87 [3,43]
3/8 BSPP	71 [2,8]	30 [1,18]	35 [1,38]					42 [1,65]	15 [0,59]	89 [3,5]
1/2 BSPP	83 [3,27]	35 [1,38]	40 [1,57]				36 [1,42]	18 [0,71]	94 [3,7]	
3/4 BSPP	95 [3,74]	49 [1,93]	57 [2,24]	6,2 [0,24]	6 [0,24]	180 [7,09]	50 [1,97]	62,5 [2,46]	25,4 [1]	105 [4,13]
1 BSPP	112 [4,41]	55 [2,17]	65 [2,56]					66,5 [2,62]	29,5 [1,16]	113 [4,45]
1-1/4 BSPP	120 [4,72]									
1-1/2 BSPP	124 [4,88]									

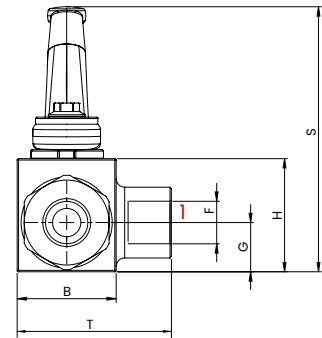
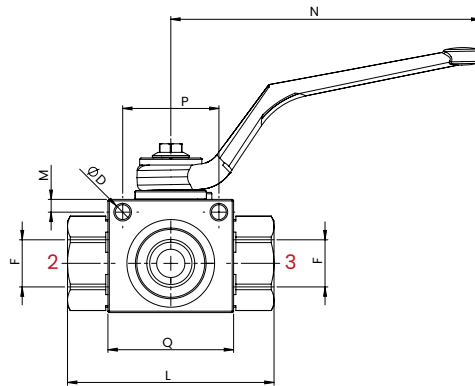
HYDRAULIC CIRCUIT



ORDERING CODE

ORDERING CODE	F	MAX FLOW l/min USgpm	MAX PRESSURE bar PSI	WEIGHT kg lbt
GE21B	1/4 BSPP	25 [6,6]	500 [7250]	0,38 [0,84]
GE22B	3/8 BSPP	35 [9,2]		0,47 [1,04]
GE23B	1/2 BSPP	60 [15,8]		0,64 [1,41]
GE24B	3/4 BSPP	100 [26,4]	420 [6090]	1,44 [3,17]
GE25B	1 BSPP	150 [39,6]		2,22 [4,89]
GE26B	1-1/4 BSPP		350 [5075]	2,27 [5]
GE27B	1-1/2 BSPP			2,39 [5,27]

BALL VALVES

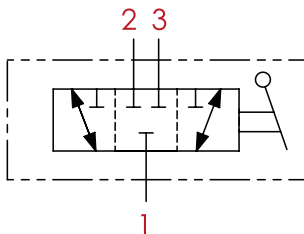


TECHNICAL CHARACTERISTICS

mm [Inches]

F	B	H	D	N	Q	G	S	T	P	M	L
1/4 BSPP	26 [1,02]	33 [1,3]	4,1 [0,2]	110 [4,33]	40 [1,57]	14,5 [0,57]	87 [3,43]	42 [1,65]	34 [1,34]	4 [0,08]	69 [2,72]
3/8 BSPP	30 [1,18]	35 [1,38]			42 [1,65]	15 [0,59]	89 [3,5]	46 [1,81]			71 [2,8]
1/2 BSPP	35 [1,38]	40 [1,57]			44 [1,73]	18 [0,71]	94 [3,7]	54 [2,13]			83 [3,27]
3/4 BSPP	49 [1,93]	57 [2,24]	6,2 [0,24]	180 [7,09]	62,5 [2,46]	25,4 [1]	105 [4,13]	75 [2,95]	50 [1,97]	6 [0,24]	95 [3,74]
1 BSPP	55 [2,17]	65 [2,56]			66,5 [2,62]	29,5 [1,16]	113 [4,45]	89 [3,5]			112 [4,41]
1-1/4 BSPP					120 [4,72]						
1-1/2 BSPP					124 [4,88]						

HYDRAULIC CIRCUIT



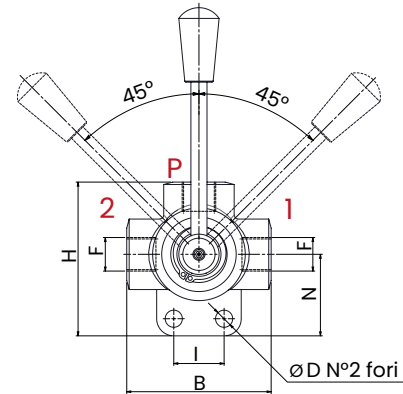
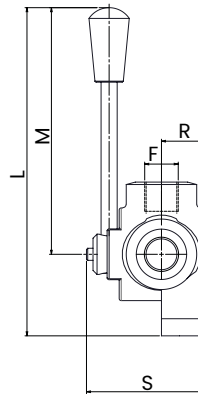
Warning
Pressure inlet only from center port 1

ORDERING CODE

ORDERING CODE	F	MAX FLOW l/min USgpm	MAX PRESSURE bar PSI	WEIGHT kg lbt
GE31B	1/4 BSPP	25 [6,6]	500 [7250]	0,41 [0,9]
GE32B	3/8 BSPP	35 [9,2]		0,51 [1,12]
GE33B	1/2 BSPP	60 [15,8]		0,72 [1,59]
GE34B	3/4 BSPP	100 [26,4]	420 [6090]	1,58 [3,48]
GE35B	1 BSPP	150 [39,6]		2,42 [5,34]
GE36B	1-1/4 BSPP		2,6 [5,73]	
GE37B	1-1/2 BSPP		2,76 [6,08]	

D3 FLOW DIVERTERS

3 WAYS FLOW DIVERTERS

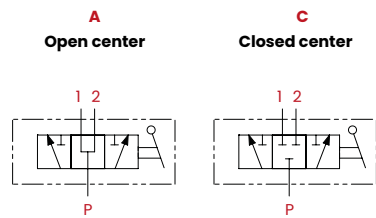


TECHNICAL CHARACTERISTICS

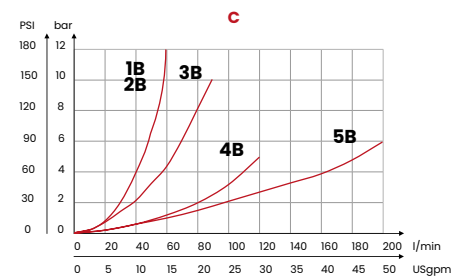
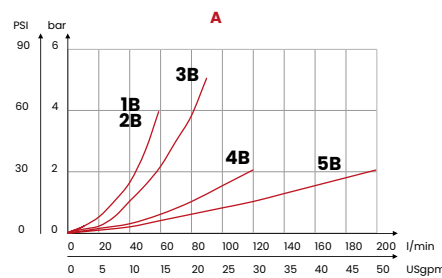
mm [Inches]

F	B	H	L	Ø D	I	M	N	S	R
1/4 BSPP	70 [2,76]	75,5 [2,97]	155,5 [6,12]	8,5 [0,33]	25 [0,98]	115 [4,53]	32 [1,26]	57 [2,24]	21 [0,83]
3/8 BSPP									
1/2 BSPP	80 [3,15]	86 [3,39]	161 [6,34]	10,5 [0,41]	32 [1,26]	36 [1,42]	63 [2,48]	24 [0,94]	
3/4 BSPP	90 [3,54]	98,5 [3,88]	168,5 [6,63]						
1 BSPP	98 [3,86]	110 [4,33]	176,5 [6,95]			50 [1,97]	77 [3,03]	31 [1,22]	

HYDRAULIC CIRCUIT



PERFORMANCES

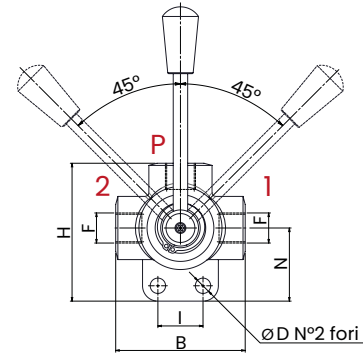
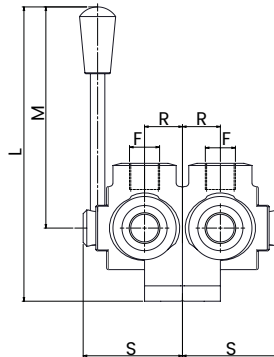


ORDERING CODE

ORDERING CODE	F	MAX FLOW l/min USgpm	MAX PRESSURE bar PSI	WEIGHT kg lbt
D3A1B	1/4 BSPP	60 [15,8]	350 [5075]	0,8 [1,8]
D3A2B	3/8 BSPP			
D3A3B	1/2 BSPP	90 [23,8]		1,2 [2,65]
D3A4B	3/4 BSPP	120 [31,7]		1,8 [3,97]
D3A5B	1 BSPP	200 [52,8]	300 [4000]	2,7 [5,95]
D3C1B	1/4 BSPP	60 [15,8]	350 [5075]	0,8 [1,8]
D3C2B	3/8 BSPP			
D3C3B	1/2 BSPP	90 [23,8]		1,2 [2,65]
D3C4B	3/4 BSPP	120 [31,7]		1,8 [3,97]
D3C5B	1 BSPP	200 [52,8]	300 [4000]	2,7 [5,95]

D6 FLOW DIVERTERS

6 WAYS FLOW DIVERTERS

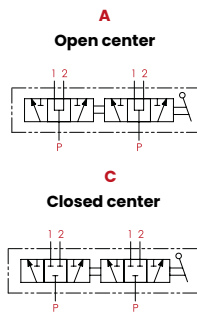


TECHNICAL CHARACTERISTICS

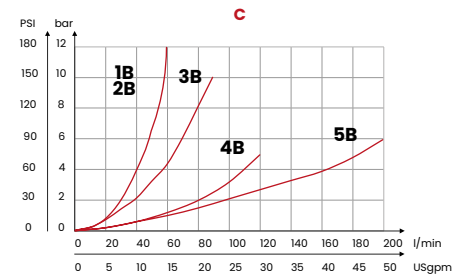
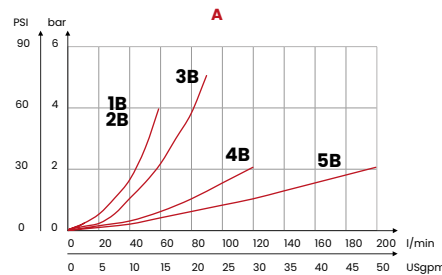
mm [Inches]

F	B	H	L	Ø D	I	M	N	S	R	
1/4 BSPP	70 [2,76]	75,5 [2,97]	155,5 [6,12]	8,5 [0,33]	25 [0,98]	115 [4,53]	32 [1,26]	57 [2,24]	21 [0,83]	
3/8 BSPP										
1/2 BSPP	80 [3,15]	86 [3,39]	161 [6,34]		10,5 [0,41]		32 [1,26]	36 [1,42]	63 [2,48]	24 [0,94]
3/4 BSPP	90 [3,54]	98,5 [3,88]	168,5 [6,63]					42 [1,65]	67 [2,64]	26 [1,02]
1 BSPP	98 [3,86]	110 [4,33]	176,5 [6,95]			50 [1,97]	77 [3,03]	31 [1,22]		

HYDRAULIC CIRCUIT



PERFORMANCES

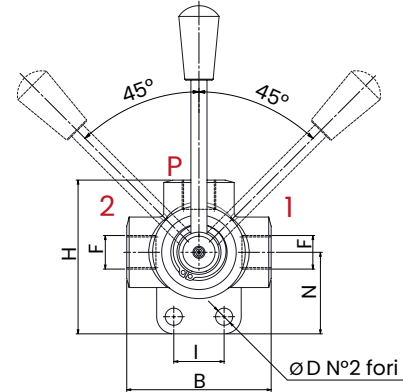
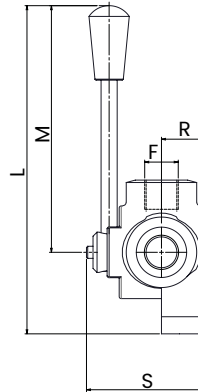


ORDERING CODE

ORDERING CODE	F	MAX FLOW l/min USgpm	MAX PRESSURE bar PSI	WEIGHT kg lbt
D6A1B	1/4 BSPP	60+60 [15,8+15,8]	350 [5075]	1,5 [3,31]
D6A2B	3/8 BSPP			
D6A3B	1/2 BSPP	90+90 [23,8+23,8]		2,3 [5,07]
D6A4B	3/4 BSPP	120+120 [31,7+31,7]	300 [4000]	3,5 [7,72]
D6A5B	1 BSPP	200+200 [52,8+52,8]		5,3 [11,68]
D6C1B	1/4 BSPP	60+60 [15,8+15,8]	350 [5075]	1,5 [3,31]
D6C2B	3/8 BSPP			
D6C3B	1/2 BSPP	90+90 [23,8+23,8]		2,3 [5,07]
D6C4B	3/4 BSPP	120+120 [31,7+31,7]	300 [4000]	3,5 [7,72]
D6C5B	1 BSPP	200+200 [52,8+52,8]		5,3 [11,68]

14 FLOW INVERTERS

4 WAYS FLOW INVERTERS

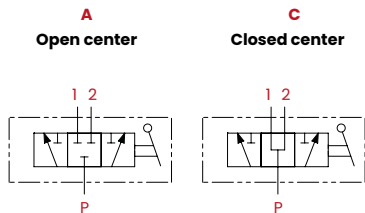


TECHNICAL CHARACTERISTICS

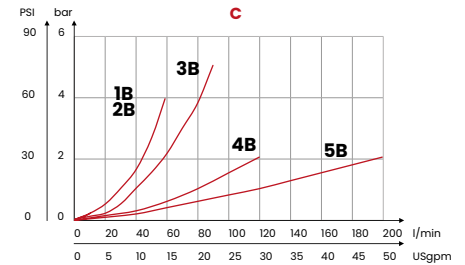
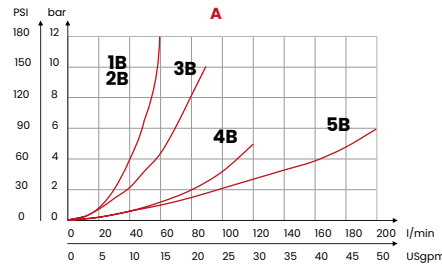
mm [inches]

F	B	L	Ø D	I	M	R	S	H
1/4 BSPP	80 [3,15]	155 [6,10]	8,5 [0,33]	54 [2,13]	115 [4,53]	24 [0,94]	63 [2,48]	28 [1,10]
3/8 BSPP								
1/2 BSPP								
3/4 BSPP	94 [3,70]	162 [6,38]	10,5 [0,41]	74 [2,91]		31 [1,22]	77 [3,03]	38 [1,50]
1 BSPP								

HYDRAULIC CIRCUIT



PERFORMANCES

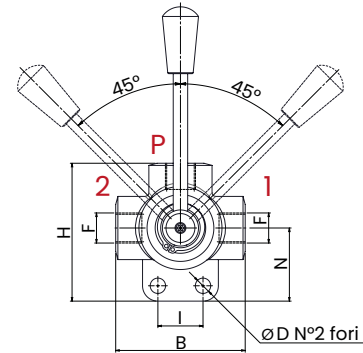
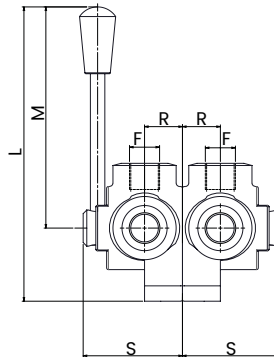


ORDERING CODE

ORDERING CODE	F	MAX FLOW l/min USgpm	MAX PRESSURE bar PSI	WEIGHT kg lbt
14A1B	1/4 BSPP	60 [15,8]	350 [5075]	1,3 [2,8]
14A2B	3/8 BSPP			
14A3B	1/2 BSPP			
14A4B	3/4 BSPP	120 [31,7]	300 [4000]	2,8 [6,1]
14A5B	1 BSPP	200 [52,8]		
14C1B	1/4 BSPP	60 [15,8]	350 [5075]	1,3 [2,8]
14C2B	3/8 BSPP			
14C3B	1/2 BSPP			
14C4B	3/4 BSPP	120 [31,7]	300 [4000]	2,8 [6,1]
14C5B	1 BSPP	200 [52,8]		

18 FLOW INVERTERS

8 WAYS FLOW DIVERTERS

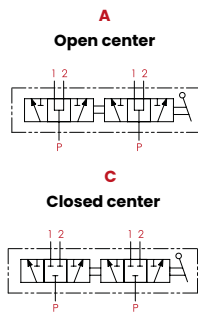


TECHNICAL CHARACTERISTICS

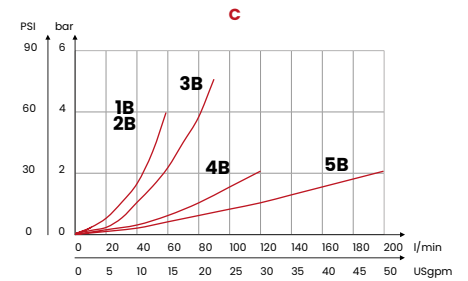
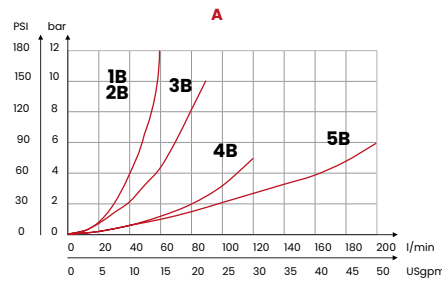
mm [Inches]

F	B	L	Ø D	I	M	R	S	H
1/4 BSPP	80 [3,15]	155 [6,10]	8,5 [0,33]	54 [2,13]	115 [4,53]	24 [0,94]	63 [2,48]	28 [1,10]
3/8 BSPP								
1/2 BSPP								
3/4 BSPP	94 [3,70]	162 [6,38]	10,5 [0,41]	74 [2,91]		31 [1,22]	77 [3,03]	38 [1,50]
1 BSPP								

HYDRAULIC CIRCUIT



PERFORMANCES



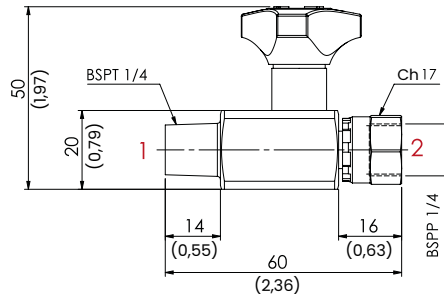
ORDERING CODE

ORDERING CODE	F	MAX FLOW l/min USgpm	MAX PRESSURE bar PSI	WEIGHT kg lbt
18A1B	1/4 BSPP	60 [15,8]	350 [5075]	2,3 [4,85]
18A2B	3/8 BSPP			
18A3B	1/2 BSPP			
18A4B	3/4 BSPP			
18A5B	1 BSPP			
18C1B	1/4 BSPP	90 [23,8]	300 [4000]	4 [8,82]
18C2B	3/8 BSPP			
18C3B	1/2 BSPP			
18C4B	3/4 BSPP			
18C5B	1 BSPP			

ORDERING CODE

RLM

TECHNICAL CHARACTERISTICS



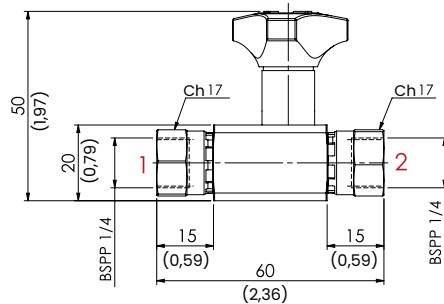
mm
[Inches]

MAX PRESSURE bar PSI	WEIGHT kg lbt
400 [5800]	0,15 [0,33]

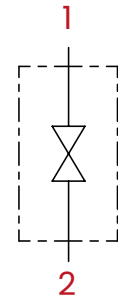
ORDERING CODE

RLG

HYDRAULIC CIRCUIT

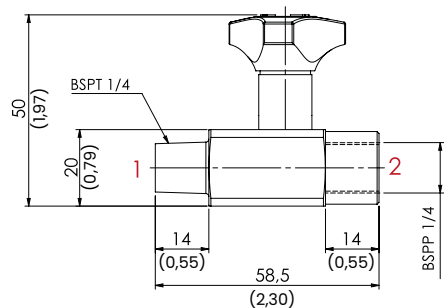


mm
[Inches]



ORDERING CODE

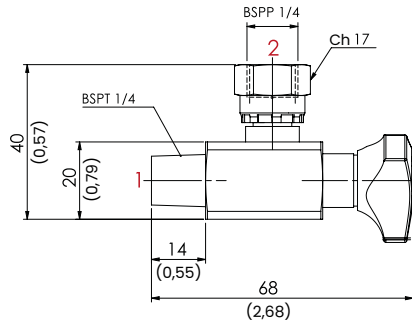
RLF



mm
[Inches]

ORDERING CODE

RTM



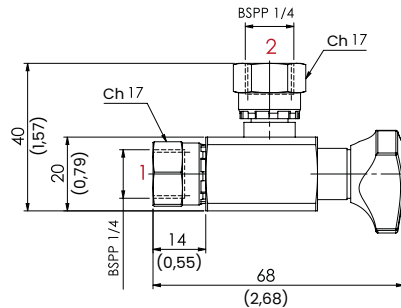
mm
[Inches]

TECHNICAL CHARACTERISTICS

MAX PRESSURE bar PSI	WEIGHT kg lbt
400 [5800]	0,15 [0,33]

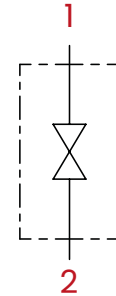
ORDERING CODE

RTG



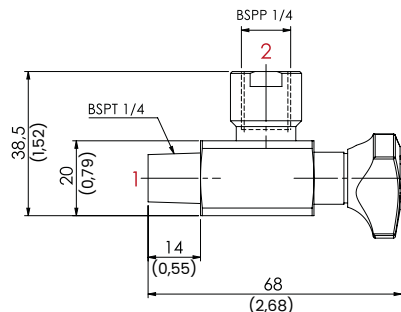
mm
[Inches]

HYDRAULIC CIRCUIT



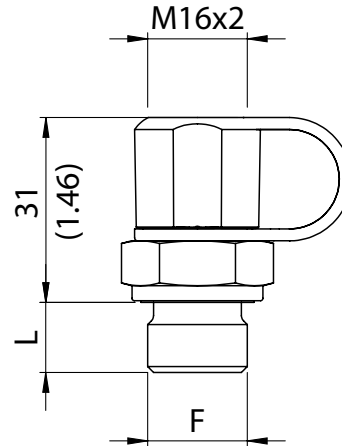
ORDERING CODE

RTF



mm
[Inches]

TEST COUPLINGS FOR PRESSURE GAUGE

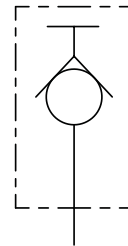


mm
[Inches]

TECHNICAL CHARACTERISTICS

F	Ch	L
1/8 BSPP	17	8 [0,31]
1/4 BSPP	19	12 [0,47]
3/8 BSPP	22	
1/2 BSPP	27	14 [0,55]

HYDRAULIC CIRCUIT



ORDERING CODE

ORDERING CODE	F	MAX PRESSURE bar PSI	TORQUE OF TIGHTENING Nm lbt ft	WEIGHT kg lbt
MPP0B	1/8 BSPP	400 [5800]	20 [14,6]	0,07 [0,16]
MPP1B	1/4 BSPP	630 [9140]	30 [22]	0,08 [0,18]
MPP2B	3/8 BSPP		60 [44]	0,10 [0,22]
MPP3B	1/2 BSPP		80 [58,6]	0,13 [0,29]

TAMPER PROOF CAP

USEFUL FOR M10 NUTS



ORDERING CODE

ORDERING CODE
62200021